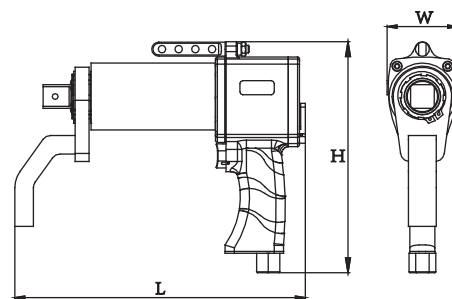


Pneumatic Torque Wrenches are widely used in automotive services and on assembly lines in many industries.

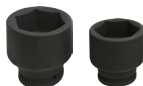
**PW Model - NovaTork Pneumatic Torque Wrench**

- For high torque and continuous use applications.
- Reaction arm, gear box and body can be flexibly connected to reach desired reaction point.
- Alloy handle, light weight.
- Work in clockwise and counter-clockwise directions.
- Can be used with standard impact sockets.



Item No.	Output Square Drive	Gear box Diameter	Dimensions LxWxH mm	Torque Range N.m	Weight kg	Max. Pressure
PWA14350	3/4"	φ 50	259x65x250	70-350	3.1	6bar
PWA24800	3/4"	φ 59	272x75x252	160-800	4.3	6bar
PWT241000	3/4"	φ 72	283x75x252	200-1000	5.7	6bar
PWT251000	1"	φ 72	283x75x252	200-1000	5.7	6bar
PWH352000	1"	φ 92- φ 59	370x100x267	400-2000	8.8	6bar
PWN352500	1"	φ 92- φ 59	370x100x267	500-2500	9.3	6bar
PWD354000	1"	φ 108- φ 59	400x108x270	800-4000	12	6bar
PWD365000	1 1/2"	φ 108- φ 59	400x108x270	1000-5000	12	6bar
PWD366000	1 1/2"	φ 126- φ 59	488x100x264	1200-6000	16	6bar

Please contact distributor for Impact Sockets. >>>



Note: Due to the product improvement, the technical parameters are subject to variation, please refer to the actual production from the factory.